



Keybridge House, Vauxhall
London SW8

GARTON JONES.COM

Keybridge House, Vauxhall London, SW8

GARTON JONES.COM

9 Albert
Embankment
London
SE1 7SP

Sales +44 (0) 20 7735 1888
nineelms@gartonjones.com
www.gartonjones.com

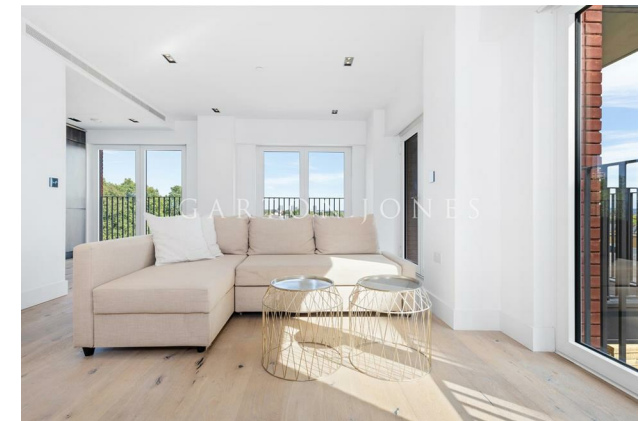
£750 Per Week

A stunning, larger than average 1-bedroom apartment comprising 668 sq.ft (62.10sq.m) available to rent in Keybridge House, a very popular residential development moments from Vauxhall Park. This spacious apartment has an open plan, dual aspect reception room with floor-to-ceiling windows and brilliant natural light, a smart integrated kitchen, large master bedroom, good storage, and a luxury bathroom suite. Residents will enjoy 24-hour concierge service, state of the art gymnasium, 15 metre swimming pool, Keybridge Club Lounge. Keybridge is also conveniently located for all the shopping and transport services of Vauxhall and Nine Elms tube stations, both less than a 5-minute walk away.

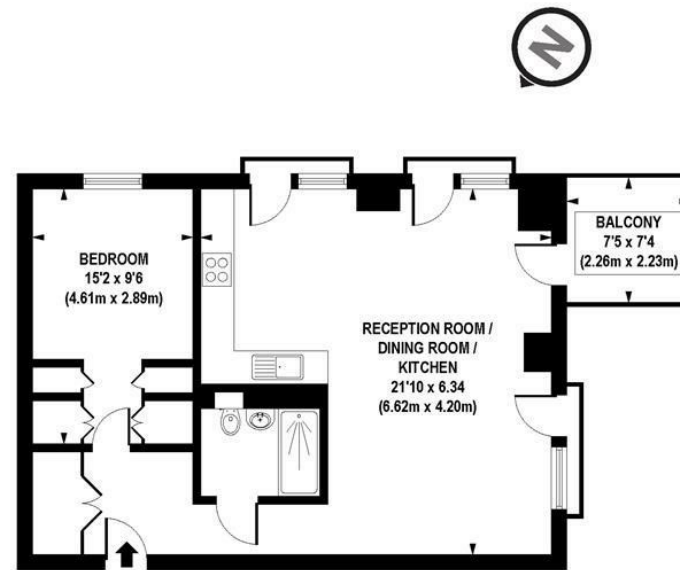
Please note furniture may differ to that shown in the current photos.

Lambeth Council Tax Band E - £2,153.43 per annum
12 Month Minimum Term
5 Week Security Deposit

- 1 Bedroom
- 668 sq.ft (62.10sq.m)
- Open Plan Reception
- Modern Integrated Kitchen
- Great Storage
- Views Towards Vauxhall Park
- 24 Hour Concierge
- Residents Gym
- Swimming Pool
- 0.3 Miles to Vauxhall & Nine Elms Tube Stations



EPC certificate available on request.



APPROX. GROSS INTERNAL FLOOR AREA 668 sq. ft / 62.10 q. m

Floorplan is for illustrative purposes only and is not to scale.
Every attempt has been made to ensure the accuracy of the floorplan shown, however all measurements, fixtures, fittings and data shown are an approximate interpretation for illustrative purposes only.
Liability for errors, omissions or mis-statement through negligence or otherwise is hereby excluded.

CP CREATIVE
PROPERTY MARKETING

